



## EVERBLUM GOLD

### Cleaning Fluid



EVERBLUM GOLD cleaning fluid is a unique, fast-drying, non-flammable cleaning fluid. It has very low odor and is ideal for cleaning of all textiles including apparel, bedding and furniture. Does not contain any Prop 65 solvents, chlorofluorocarbons (CFCs or HFCs). EVERBLUM GOLD does not contain any chemicals that require either a cancer warning or an ozone-depletion warning. The unique solvent blend is not considered a hazardous material for shipping purposes (patent pending).

# A1810R

One Gallon EVERBLUM GOLD  
CLEANING FLUID

#### Advantages:

- \* No California Prop65 chemicals
- \* High flashpoint
- \* Leaves no residue
- \* Non hazardous for shipping
- \* Fast drying & low odor
- \* T.L.V 200 ppm

*Use with:* #CG-750AJ Spray Cleaning Gun



# Diamond Needle Corp.



**WHITE  
DIAMOND**

60 COMMERCE ROAD  
CARLSTADT, NJ 07072

TEL: 201.507.1771 TOLL FREE 800.221.5818

FAX: 201.507.1715 TOLL FREE 800.833.3363

E-MAIL: INFO@DIAMONDNEEDLE.COM

**MODEL No. CG-750AJ**



## **Introduction**

- This spray cleaning gun works on the principle that air pressure is created by the reciprocating motion of an air cylinder piston and under this pressure the fluid is sprayed onto objects at very high speed.
- This spray cleaning gun has been expertly engineered using a streamlined nylon housing. It is relatively lightweight, durable, and produces a strong spray.
- This spray cleaning gun is designed for industrial use with clothing, screen printing, and embroidery. It also can be used for screen cutting, machine oiling, flower watering, laundering and kitchen cleaning.

## **Specification**

Rated voltage: 110V / 60Hz or 220V / 50Hz (See the label)

Power: 50W (110V / 60Hz) or 65W (220V / 50Hz)

Flow rate: 100CC/min

Container Volume: 1000CC

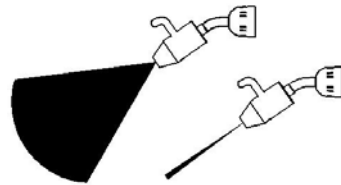
Diameter of spray nozzle: Adjustable range 0.25 – 0.3mm

## **Selection of spray fluid**

Do not use impure fluids. TCE cleaners, pure water and other neutral solutions are highly recommended. The use of inferior cleaners could result in damage to both the spray gun and fabrics.

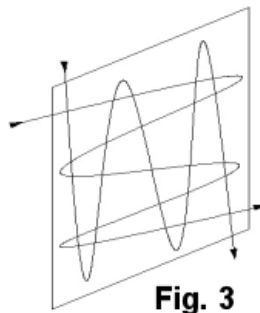
## Spray nozzle

- Adjustable Nozzle: for high pressure straight spraying and for radial mist spraying.



## Operation

1. Fill the reservoir container with spray liquid. Plug into the power supply and trigger on. The spray gun starts up with a blast of vibration. Initially only a small amount of liquid sprays out. After 2-3 seconds the spray gun reaches optimal performance and noise level subsides.

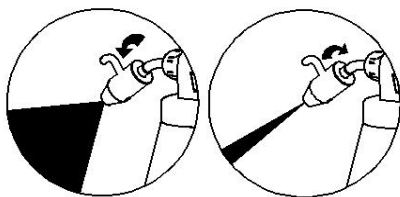


**Fig. 3**

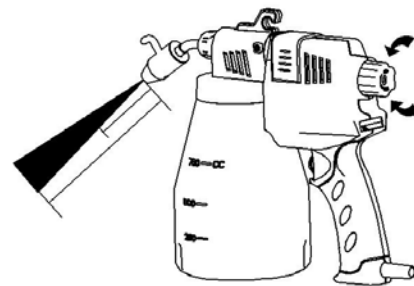
### 2. Spray distance and pattern:

The effective working distance is 20-25cm (3/4"-1"). The distance and the pressure need to be adjusted properly according to the thickness and density of objects. The thinner the object, the farther the distance is required in order not to damage the fabric. Please refer to Fig. 3 for suggested spray pattern. Gently move the spray gun at a constant speed until all the stain is eliminated. (For straight nozzle position, spraying at a 45 degree angle is recommended).

3. Adjustment of spray dispersion: The spray dispersion can be adjusted by turning the nozzle cap. As seen in Fig.4, turn the small handle on the nozzle cap clockwise. The spray dispersion becomes linear. Turn the small handle counterclockwise, spray becomes a mist.



**Fig. 4**



**Fig. 5**

4. Adjustment of spraying force: The spray force is determined by rotation of the knob on the rear of the spray gun. As Fig.5 shows, turn the knob clockwise to increase spraying force so the liquid sprays out faster and stronger. Turn the knob counterclockwise to decrease the spraying force so the liquid sprays out slower and weaker. This adjustment determines the working distance of the spray gun.

5. Knurled Adjusting Ring: The knurled adjusting ring is used for positioning the front part of gun body. When the push rod is in the right position for the pump cylinder, the air pressure created by its reciprocating motion will reach the most appropriate spraying force for cleaning. (*Note*: The factory settings are ready for optimal performance). If any adjustment needs to be made, loosen the two set screws on the front body. Turn the knurled adjusting ring clockwise or counterclockwise. Tighten the two set screws when the desired spray condition is achieved. See Fig.6.

After completion of work, unplug from the power source and keep the gun in a safe place.

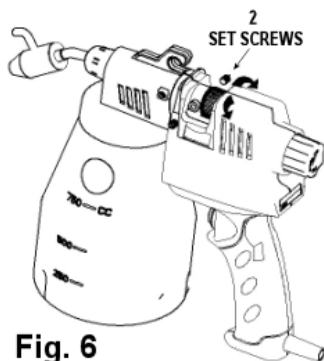


Fig. 6

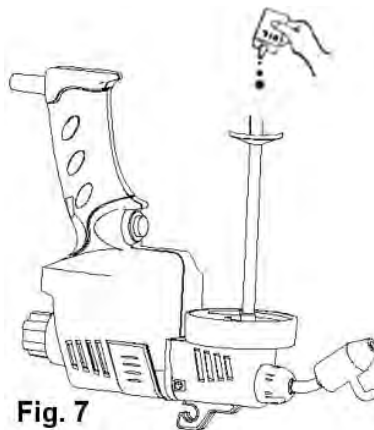


Fig. 7

### **Maintenance**

To keep the spray gun in good condition and extend its life, please empty the reservoir container after use. Trigger some shots for a few seconds until all the liquid in the air cylinder is evacuated. As Fig.7 shows, unscrew the reservoir container and then pull off the suction base. Put 3-5 drops of light clear oil into the suction pipe. Trigger on and let the oil be sucked back into the pump cylinder.

## **Repair**

This spray cleaning gun has been expertly constructed and carefully calibrated. It has been completely tested before it leaves the factory. Disassembly and major repairs should be left to professionally trained technicians.

Problems that may occur include: power supply failure, motor failure, nozzle failure, air cylinder failure, as well as the failure of cylinder spring.

### **Trouble shooting:**

1. Remove from power source before disassembly.
2. When power failure occurs check the power cord, trigger switch and motor.
3. When the spray dispersion is forked, it means the nozzle is blocked or clogged. Take off the nozzle and remove debris using a thin sharp, needle-like tool.
4. When pump cylinder jamming occurs, no liquid will be sprayed out. If the motor rumbles, replace the entire pump cylinder.
5. When the spray gun is buzzing and only some liquid spurts out, it usually is a failure of the motor coil. Change the motor.
6. When the spray pattern is not continuous and the flow reduces to 1/3 of normal output, it is the failure of the cylinder spring. Change the cylinder spring.

### **Notes**

Use only specified rated voltage and cycles.

Must be properly grounded to avoid electric shock.

Always keep the top side up when in use.

Do not spray onto any part of human or animal body.

Do not use in a wet environment.

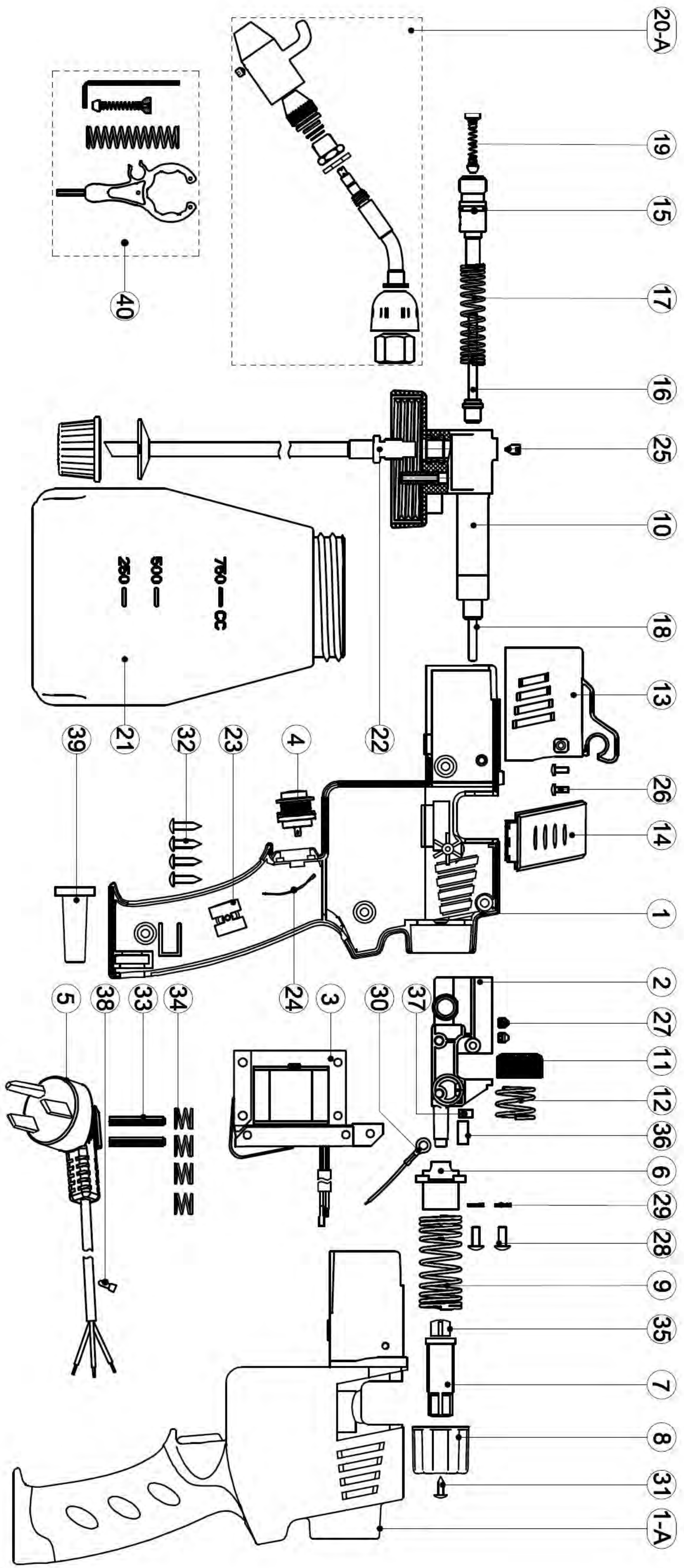
Do not spray onto flammable objects.

Keep out of reach of children.

Keep the spray gun in a safe place.

Do not substitute any components except with those of the original manufacturer.

# MODEL No. CG-750AJ



**ACCESSORIES LIST FOR CG-750AJ**

<b>Serial number</b>	<b>Description</b>	<b>Qty</b>
CG750-1	gun housing	1
CG750-1A	gun housing cover	1
CG750-2	motor bracket	1
CG750-3	motor	1
CG750-4	trigger switch	1
CG750-5	cable	1
CG750-6	volume control rod bracket	1
CG750-7	volume control rod	1
CG750-8	volume control knob	1
CG750-9	volume control knob spring	1
CG750-10	front gun body assly	1
CG750-11	adjusting ring	1
CG750-12	adjusting spring	1
CG750-13	hook	1
CG750-14	decorative cover	1
CG750-15	cylinder	1
CG750-16	front push rod	1
CG750-17	cylinder spring	1
CG750-18	back push rod	1
CG750-19	piston	1
CG750-20A	bent-head nozzel	1
CG750-21	reservoir container	1
CG750-22	suction pipe	1
CG750-23	termianal block	1
CG750-24	wire for switch	1
CG750-25	pump unit locking screw	1
CG750-26	hook locking screw	2
CG750-27	set screw for front gun body	2
CG750-28	set screw for volume control rod	2
CG750-29	washer	2
CG750-30	grounding cable	1
CG750-31	set screw for volume control knob	1
CG750-32	set screw for gun housing	1
CG750-33	pin	2
CG750-34	motor spring	4
CG750-35	cushion	1
CG750-36	silicone cushion	1
CG750-37	felt	1
CG750-38	termianal	1
CG750-39	cable sleeve	1
CG750-40	wrench, accessory package	1